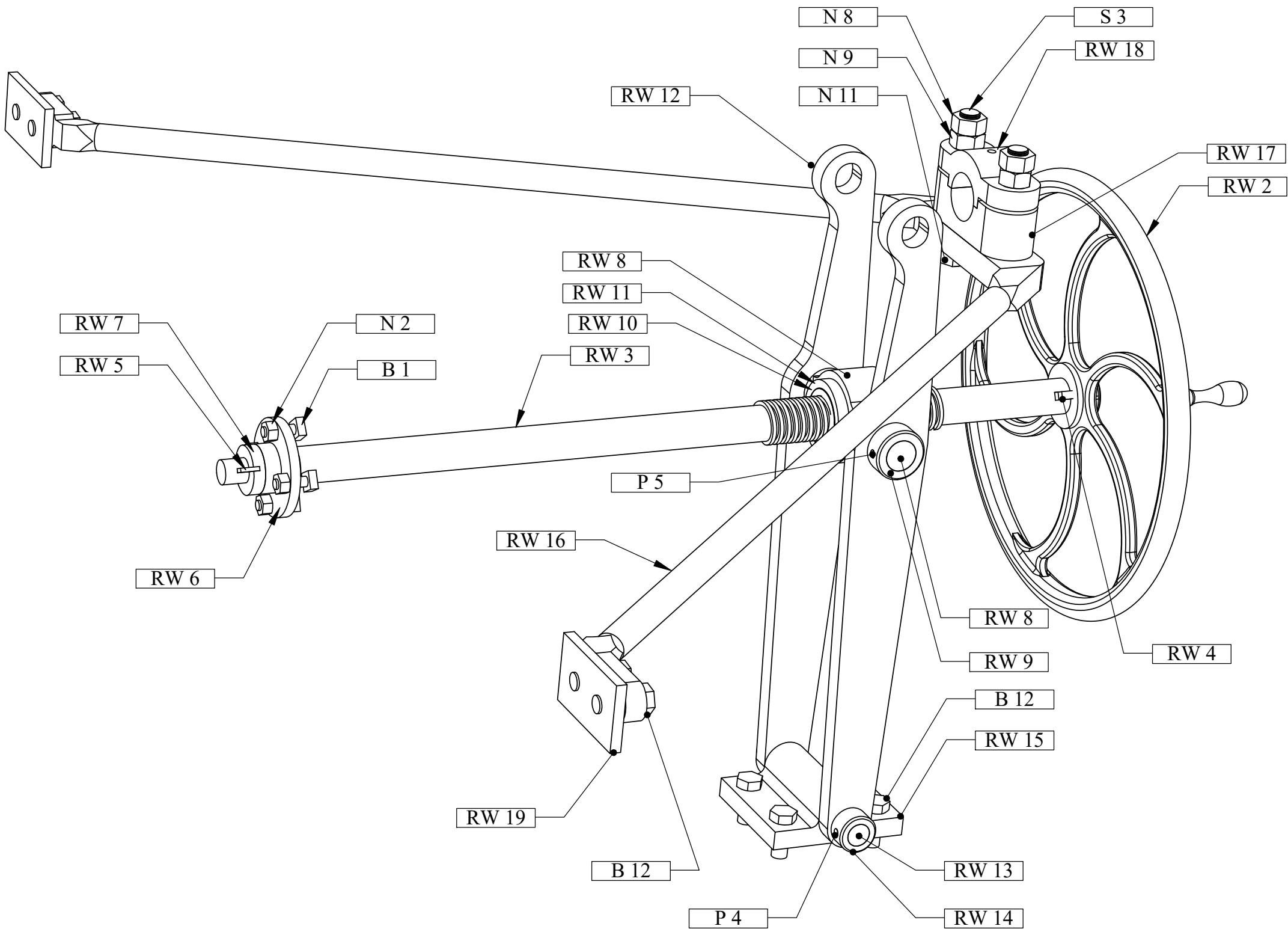


U.S.S. Monitor Steam Engine

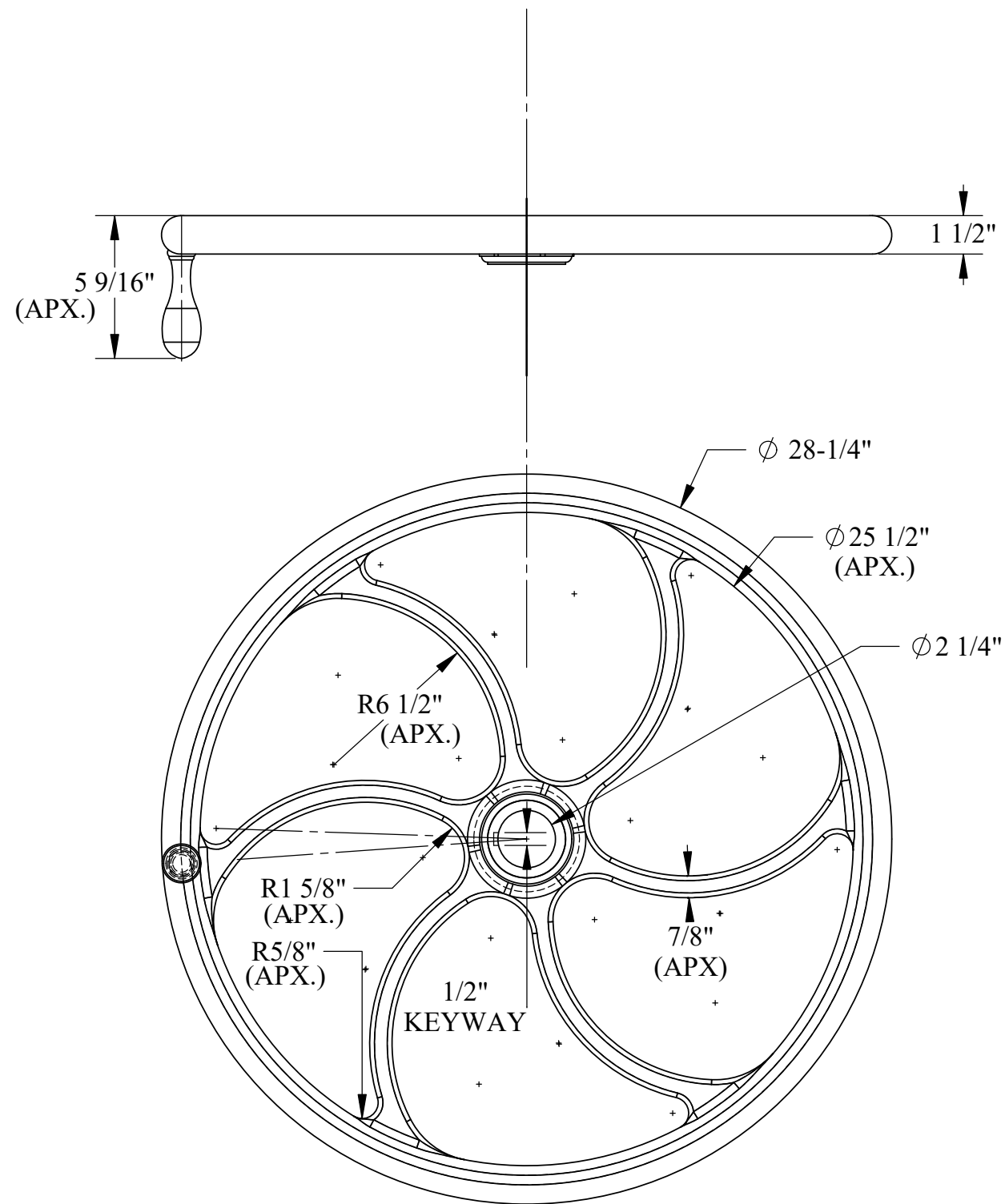
Material	Drawn By - Date	Sub-Assembly
Material not specified	RWC 10-2018	Reversing Wheel
Weight (Lbs)	Description	
496.05		
Scale		
1:32	Reversing Wheel Assembly	
Part #		
RW 1		



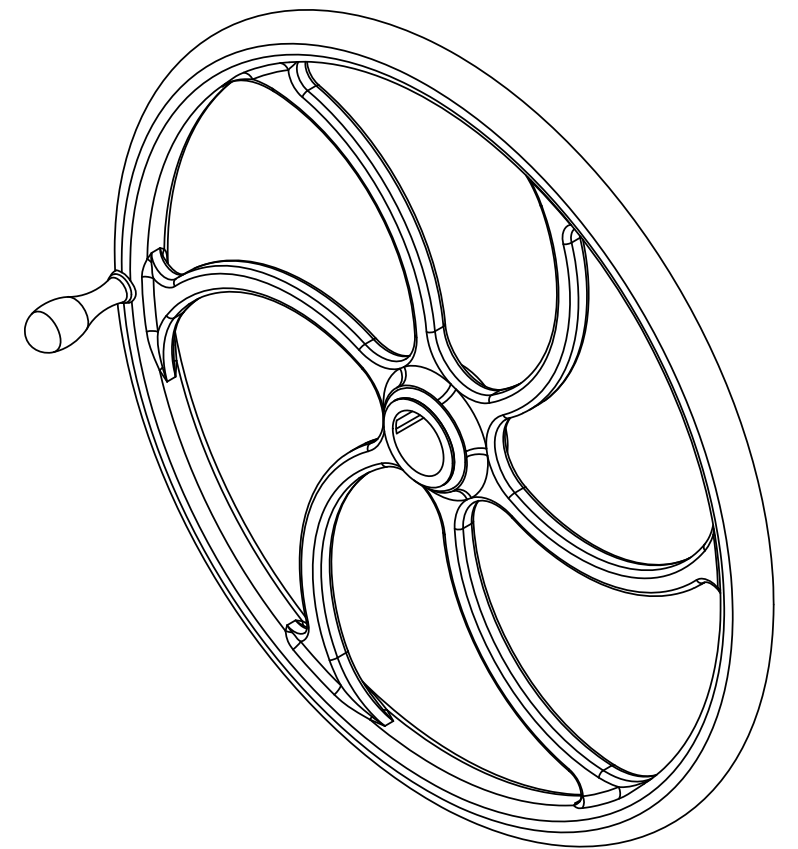
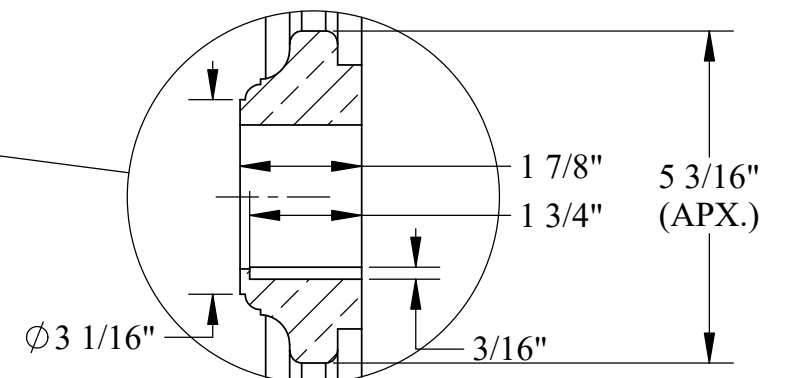
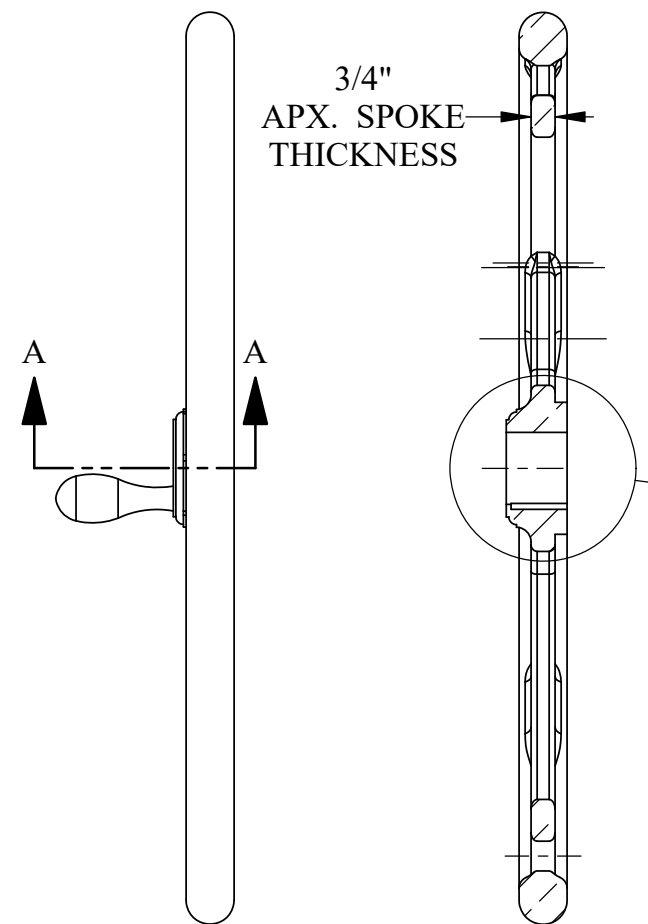
PART	DESCRIPTION	QTY.
RW 15	Stanchion Floor Pivot Plate	1
RW 2	Handwheel	1
RW 3	leadscrew Shaft	1
RW 4	Handwheel Key	1
RW 5	Bulkhead Bushing Taper Key	1
RW 6	Bulkhead Bushing	1
RW 7	Bulkhead Bushing Washer	1
RW 8	Yoke	1
RW 9	Yoke collar	2
RW 10	Leadscrew Threaded Bushing	1
RW 11	Leadscrew Threaded Bushing Nut	1
RW 12	Stanchion	2
RW 13	Pivot Block Pin	1
RW 14	Pivot Block Collar	1
RW 16	Stabilizer Bar	1
RW 17	Stabilizer Bearing Block - Bottom	1
RW 18	Stabilizer Bearing Block - Top	1
RW 19	Bulkhead Nut Plate	2
S 3	Stabilizer Bearing Stud	2
B 1	5/8" Bolt x 2"	4
B 12	1" Bolt x 2-1/2"	8
N 2	5/8" Hex Nut	4
N 8	1-1/4" Hex Nut-Special	2
N 9	1-1/4" Hex Nut-Locking	2
N 11	1-1/4" Hex Nut-Common 2-1/4" Flats	2
P 4	Steel Pin 1/2" X 2-1/2"	1
P 5	Steel Pin 1/2" X 3-1/4"	2

U.S.S. Monitor Steam Engine

Material Various	Drawn By - Date RWC 10-2018	Sub-Assembly Reversing Wheel
Weight (Lbs) 496.05	Reversing Wheel Assembly	
Scale 1:6		
Part # RW 1		

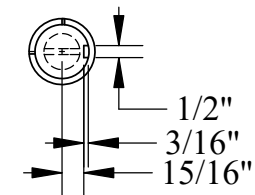
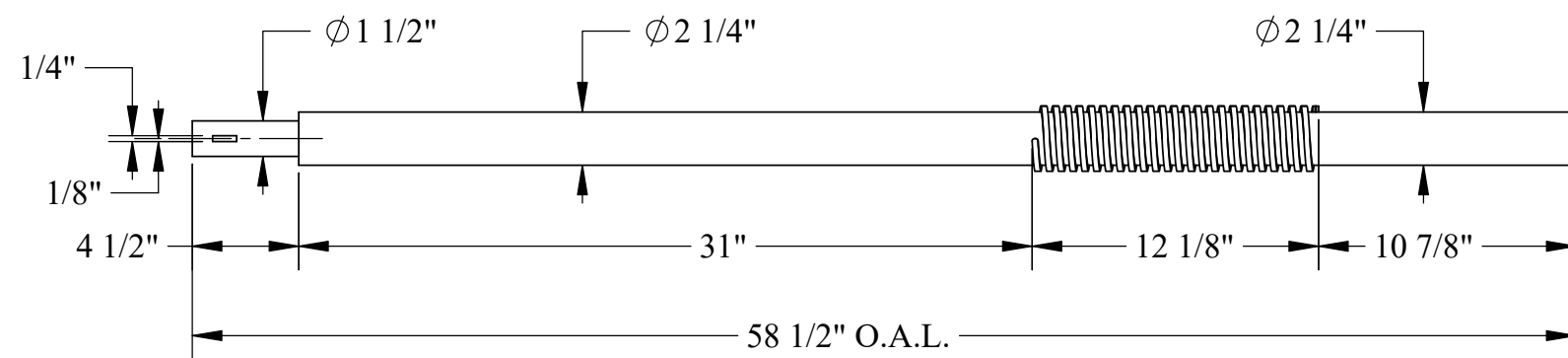
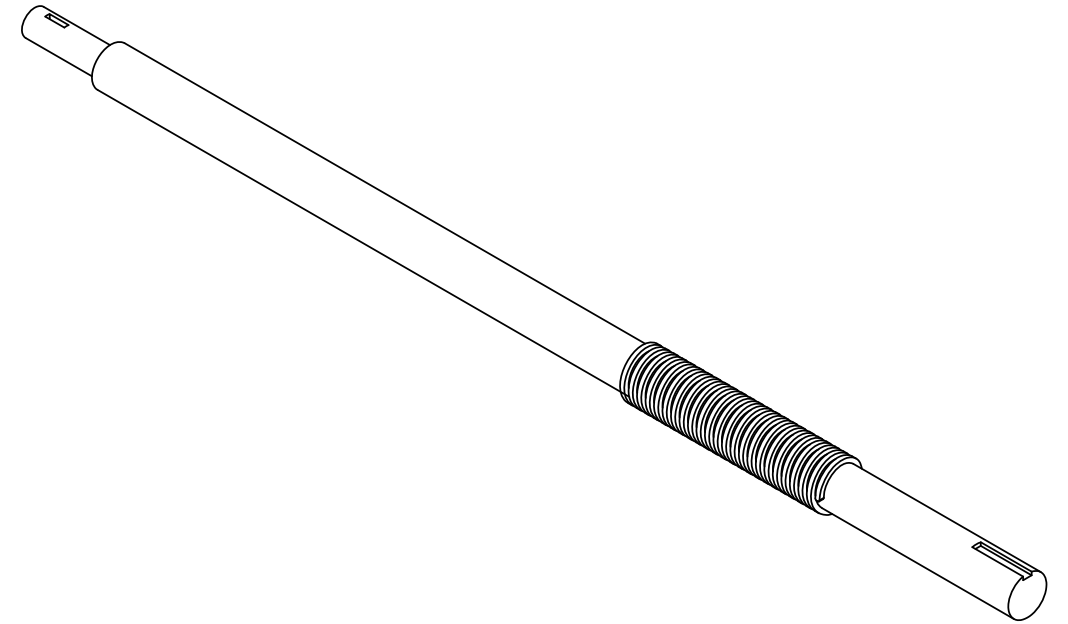
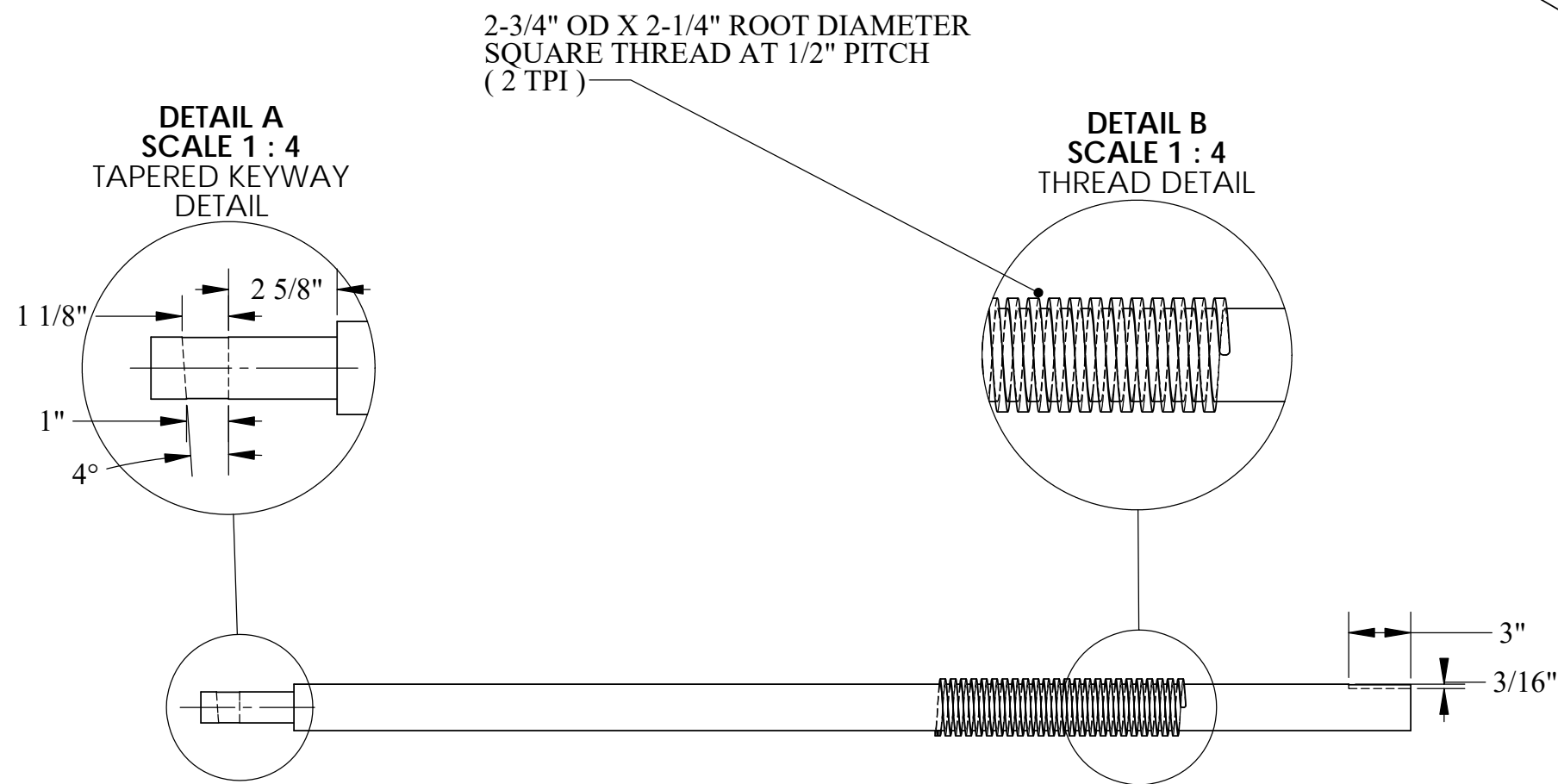


NOTE:
GENERALIZED INFORMATION FOR THIS
DRAWING OBTAINED FROM PHOTOGRAPHIC
IMAGE OF ACTUAL RECOVERED PART
AND NOT HISTORICAL DOCUMENTS.
IT IS SUBJECT TO REVISION
(APX.)=APPROXIMATELY



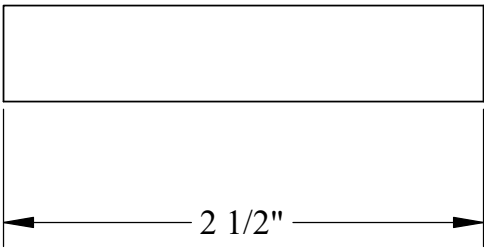
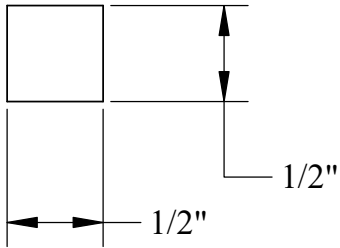
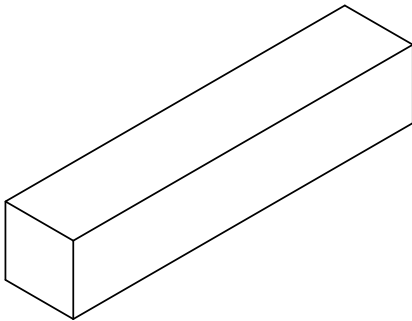
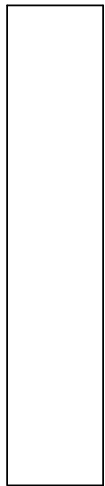
U.S.S. Monitor Steam Engine

Material Brass	Drawn By - Date RWC 10-2018	Sub-Assembly Reversing Wheel
Weight (Lbs) 73.32077	Description Handwheel	
Scale 1:6		
Part # RW 2		



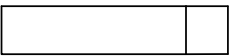
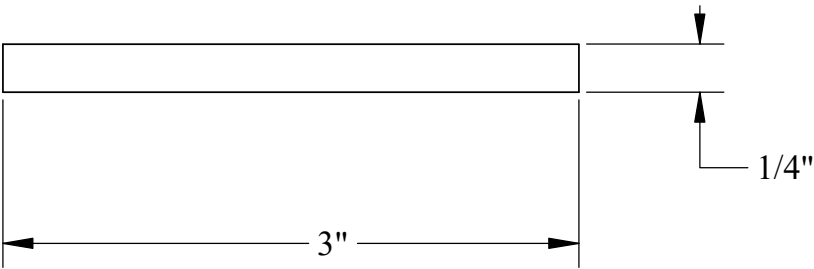
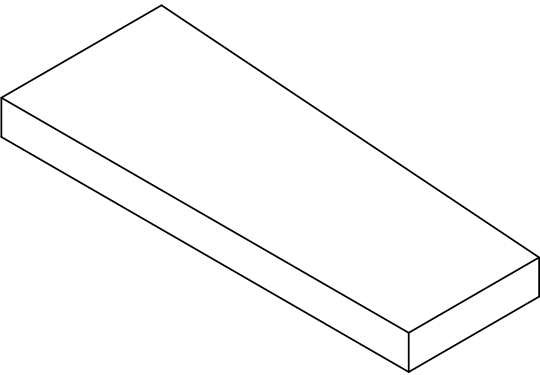
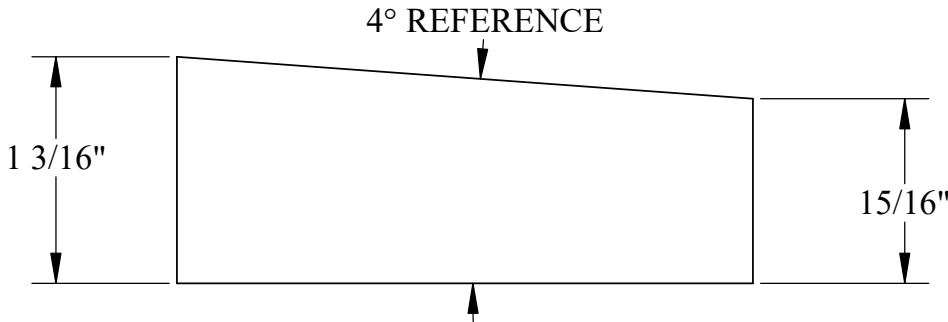
U.S.S. Monitor Steam Engine

Material STEEL	Drawn By - Date RWC 10-2018	Sub-Assembly Reversing Wheel
Weight (Lbs) 66.67	leadcrew Shaft	
Scale 1:8		
Part # RW 3		



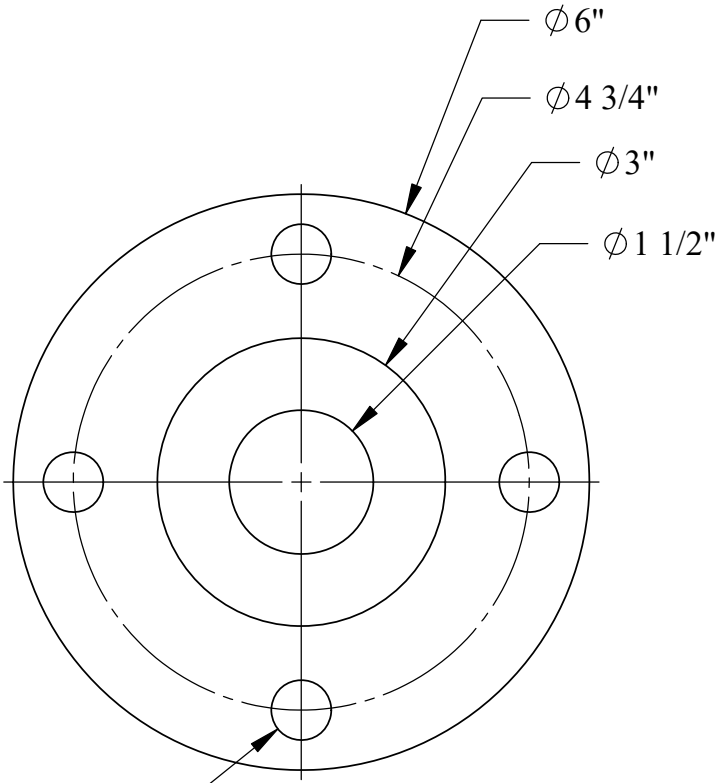
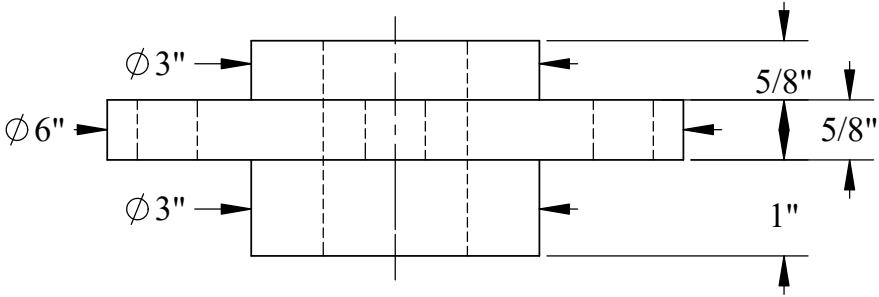
U.S.S. Monitor Steam Engine

Material STEEL	Drawn By - Date RWC 10-2018	Sub-Assembly Reversing Wheel
Weight (Lbs) 0.18	Handwheel Key	
Scale 1:1		
Part # RW 4		

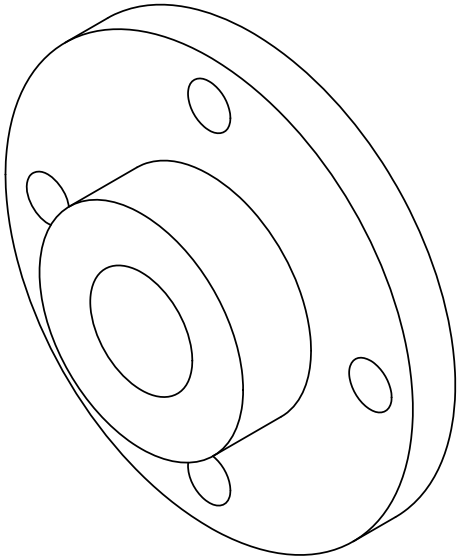
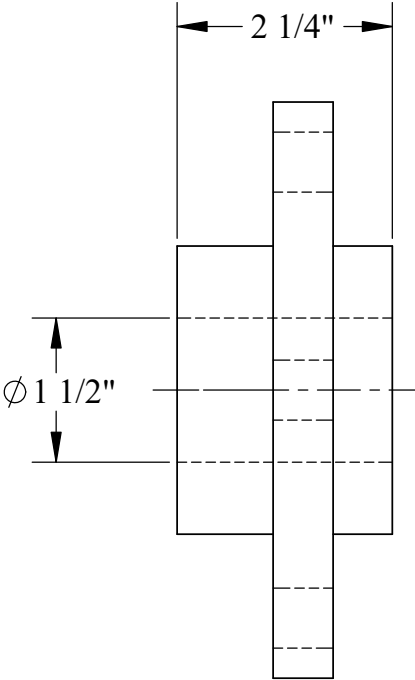


U.S.S. Monitor Steam Engine

Material STEEL	Drawn By - Date RWC 10-2018	Sub-Assembly Reversing Wheel
Weight (Lbs) 0.23	Description Bulkhead Bushing Taper Key	
Scale 1:1		
Part # RW 5		

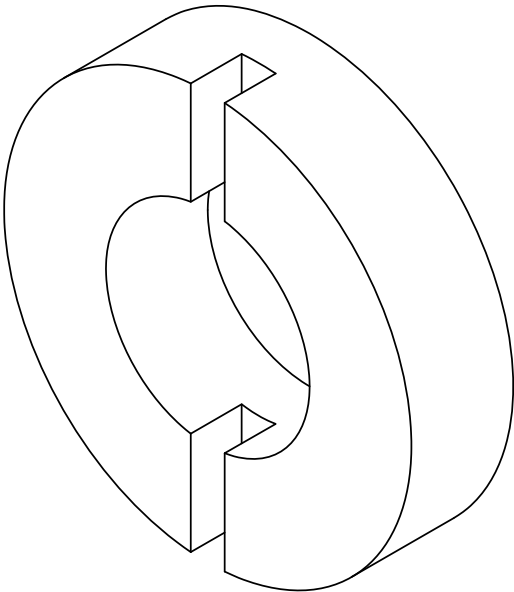
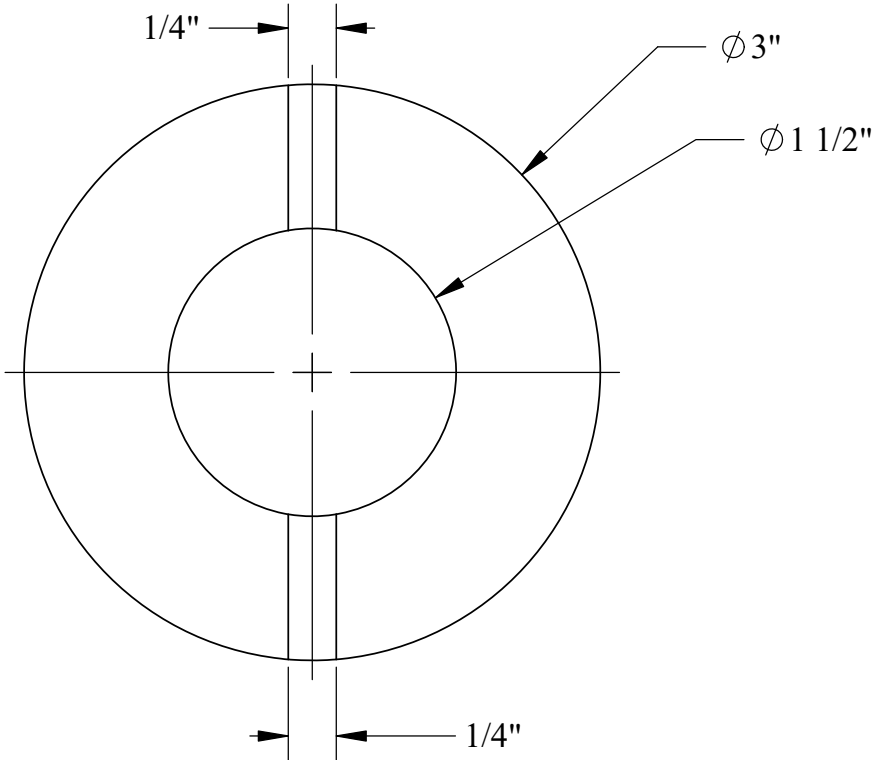
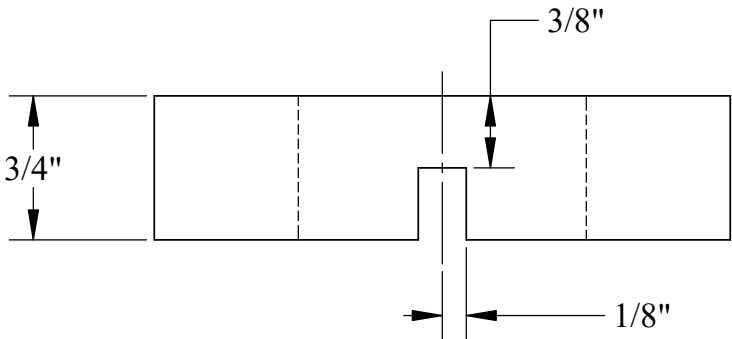


$\phi 5/8"$ THRU HOLES
4 EQUALLY SPACED
AS SHOWN ON A $4\frac{3}{4}"$ B/C



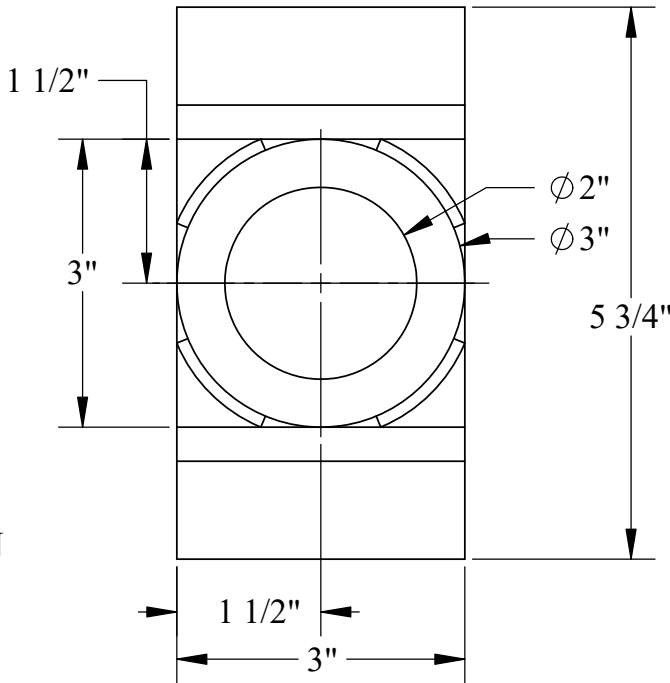
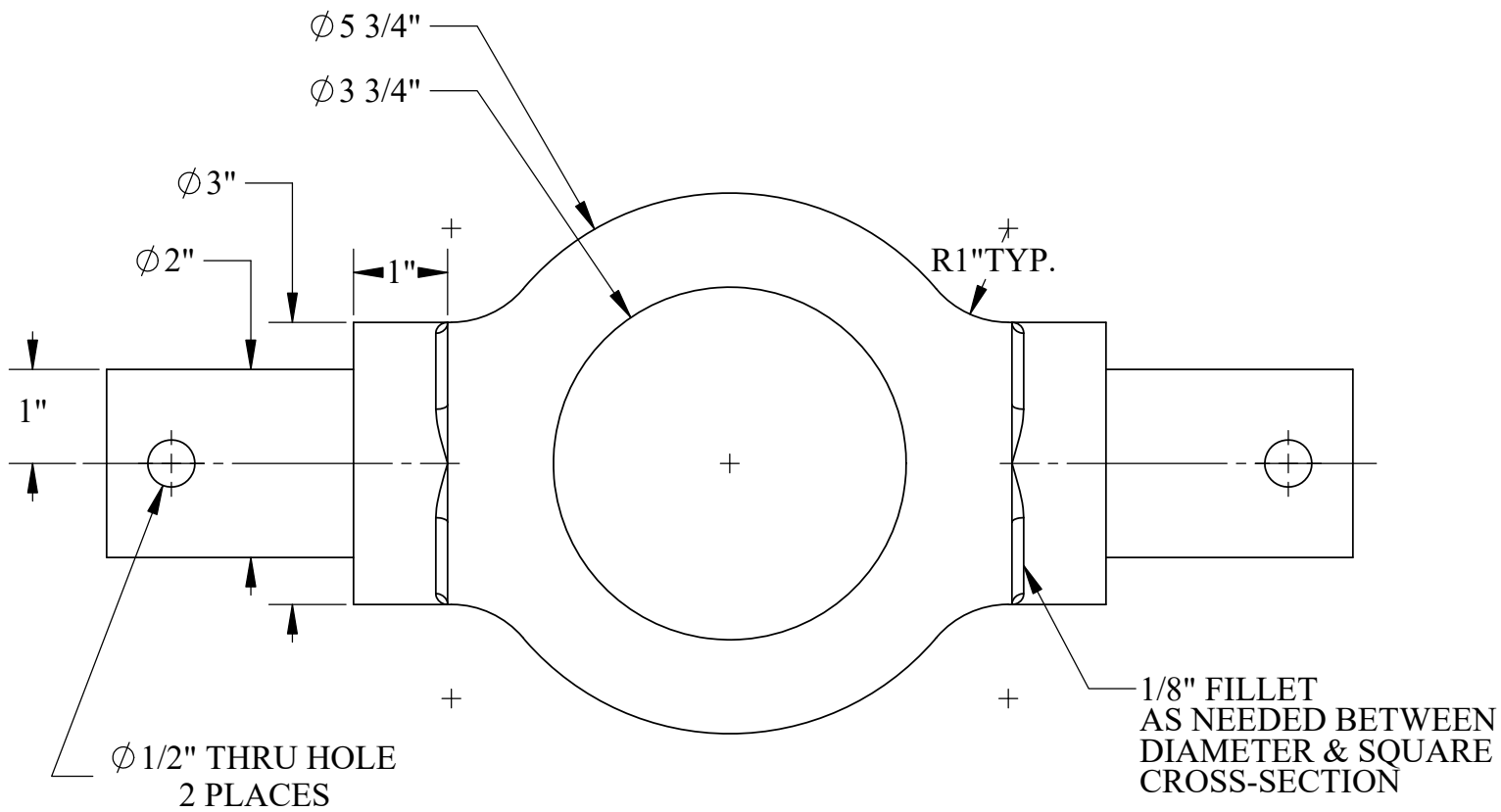
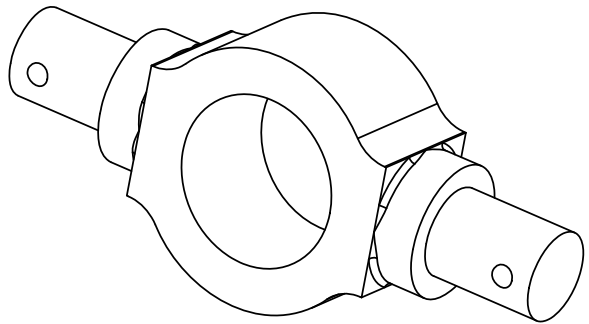
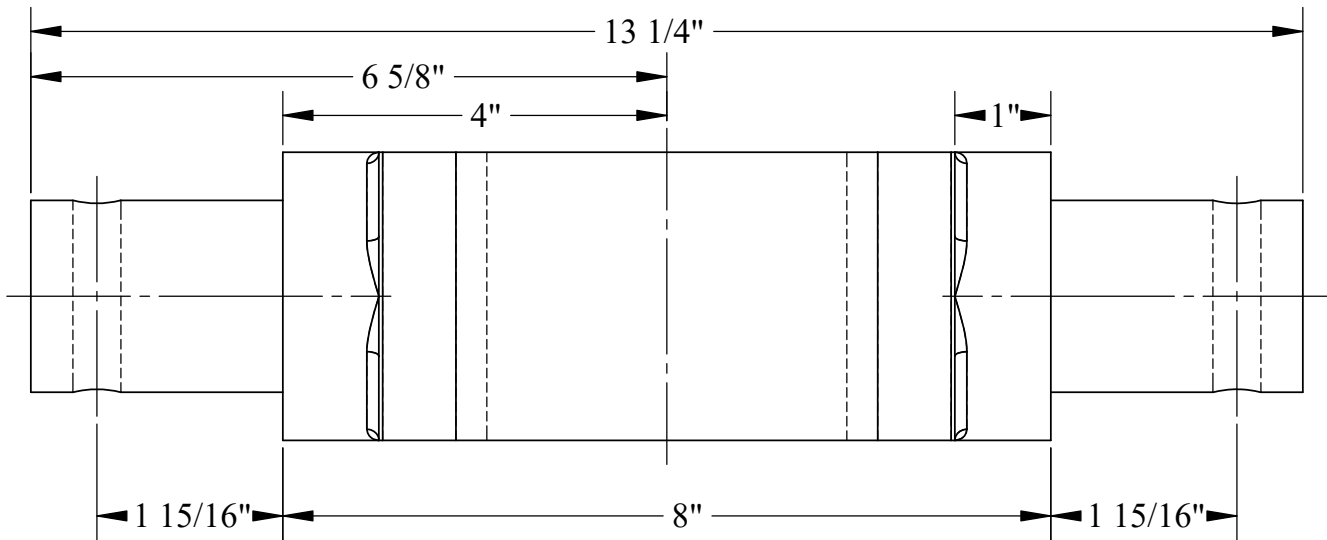
U.S.S. Monitor Steam Engine

Material Brass	Drawn By - Date RWC 10-2018	Sub-Assembly Reversing Wheel
Weight (Lbs) 7.481	Bulkhead Bushing	
Scale 1:2		
Part # RW 6		



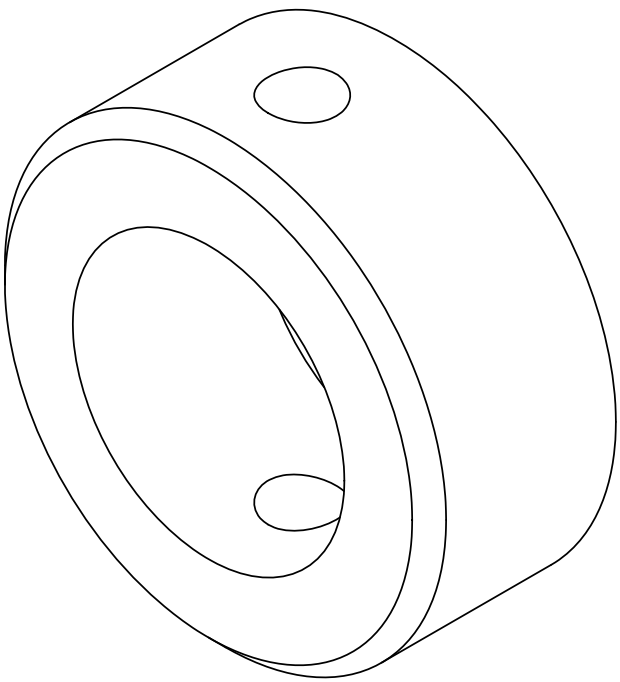
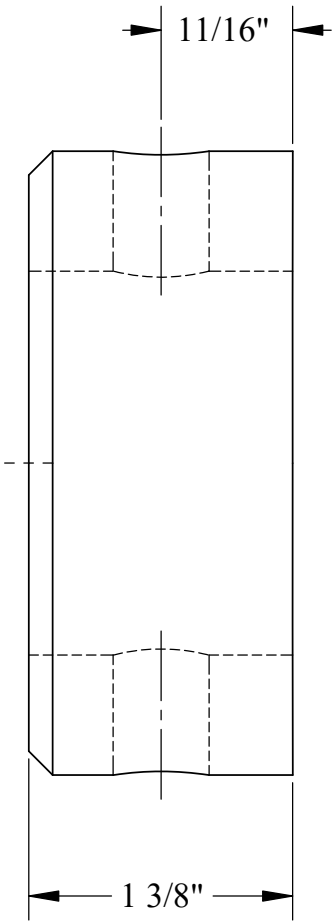
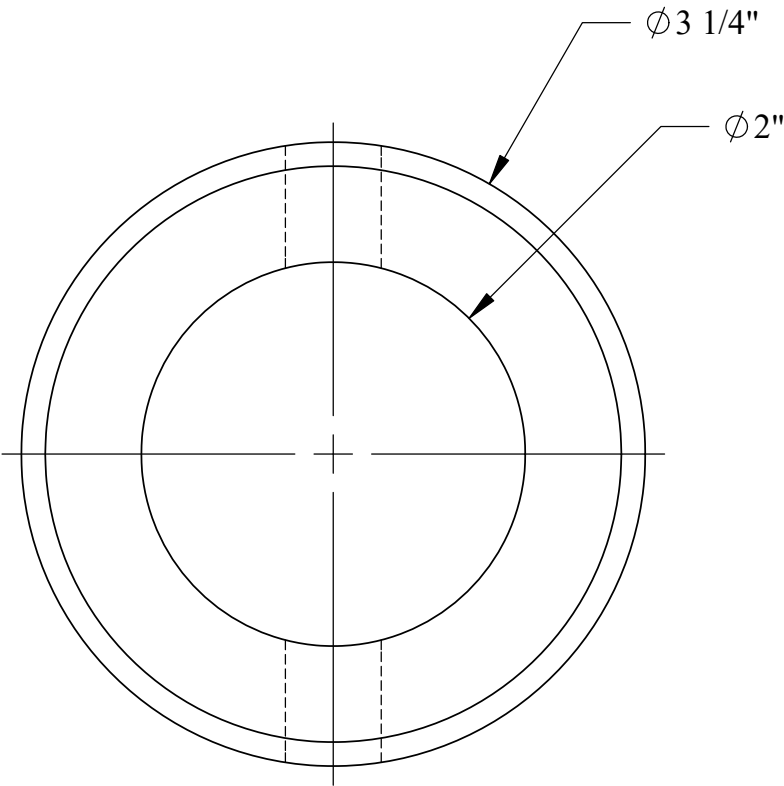
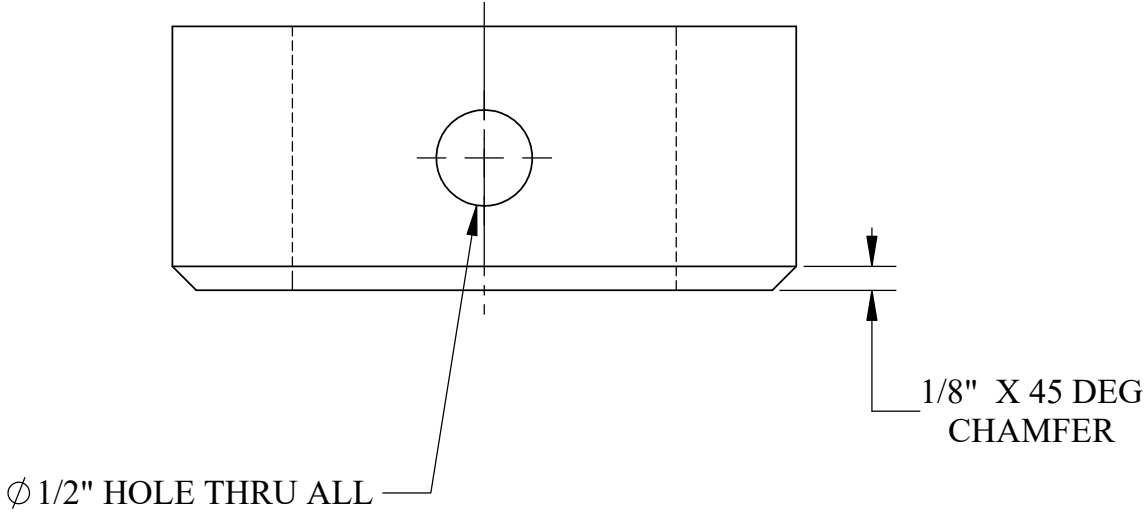
U.S.S. Monitor Steam Engine

Material	Drawn By - Date	Sub-Assembly
Cast Iron	RWC 10-2018	Reversing Wheel
Weight (Lbs)	Description	
1.00		
Scale		
1:1		
Part #	Bulkhead Bushing Washer	
RW 7		



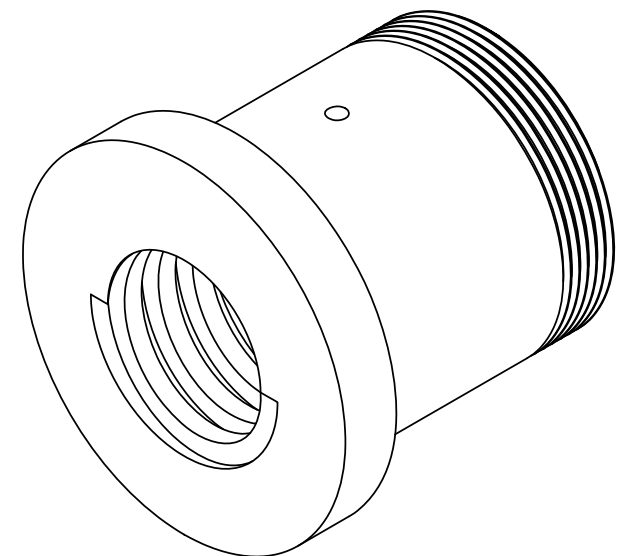
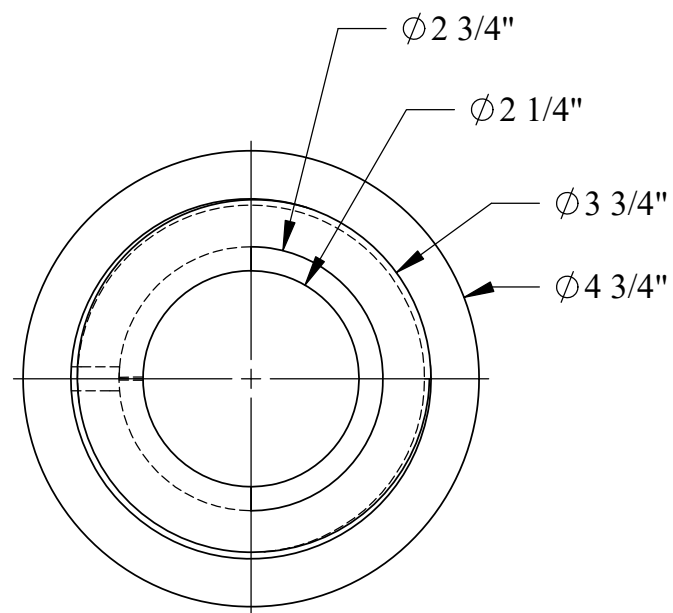
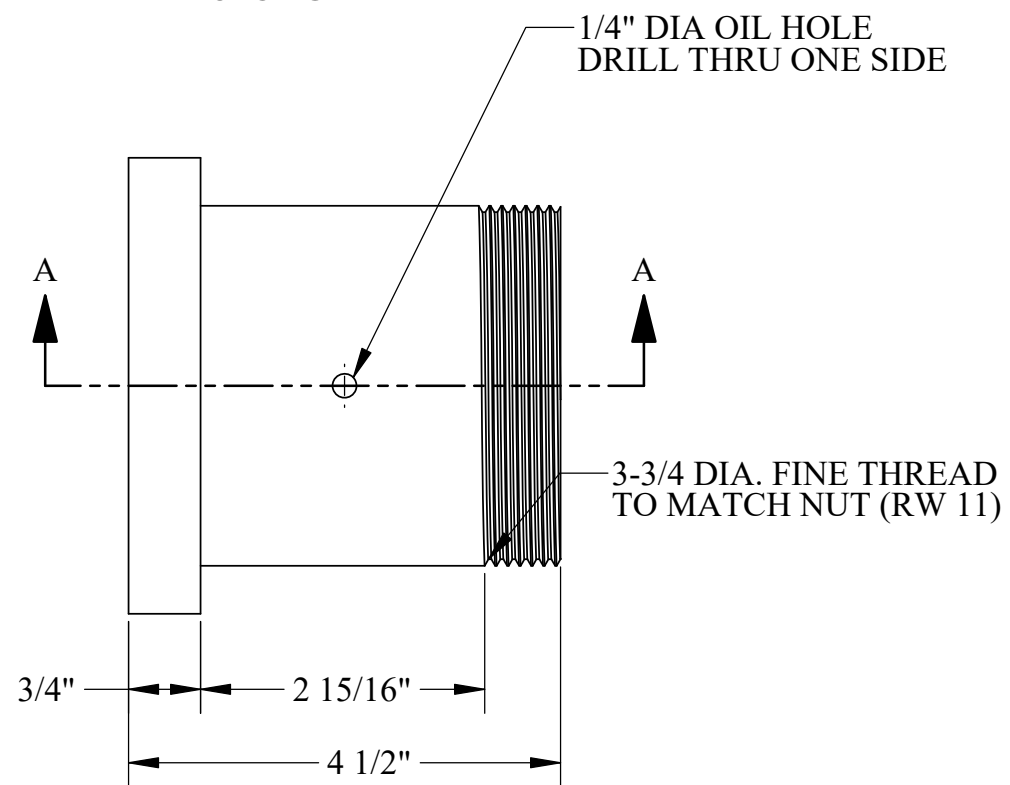
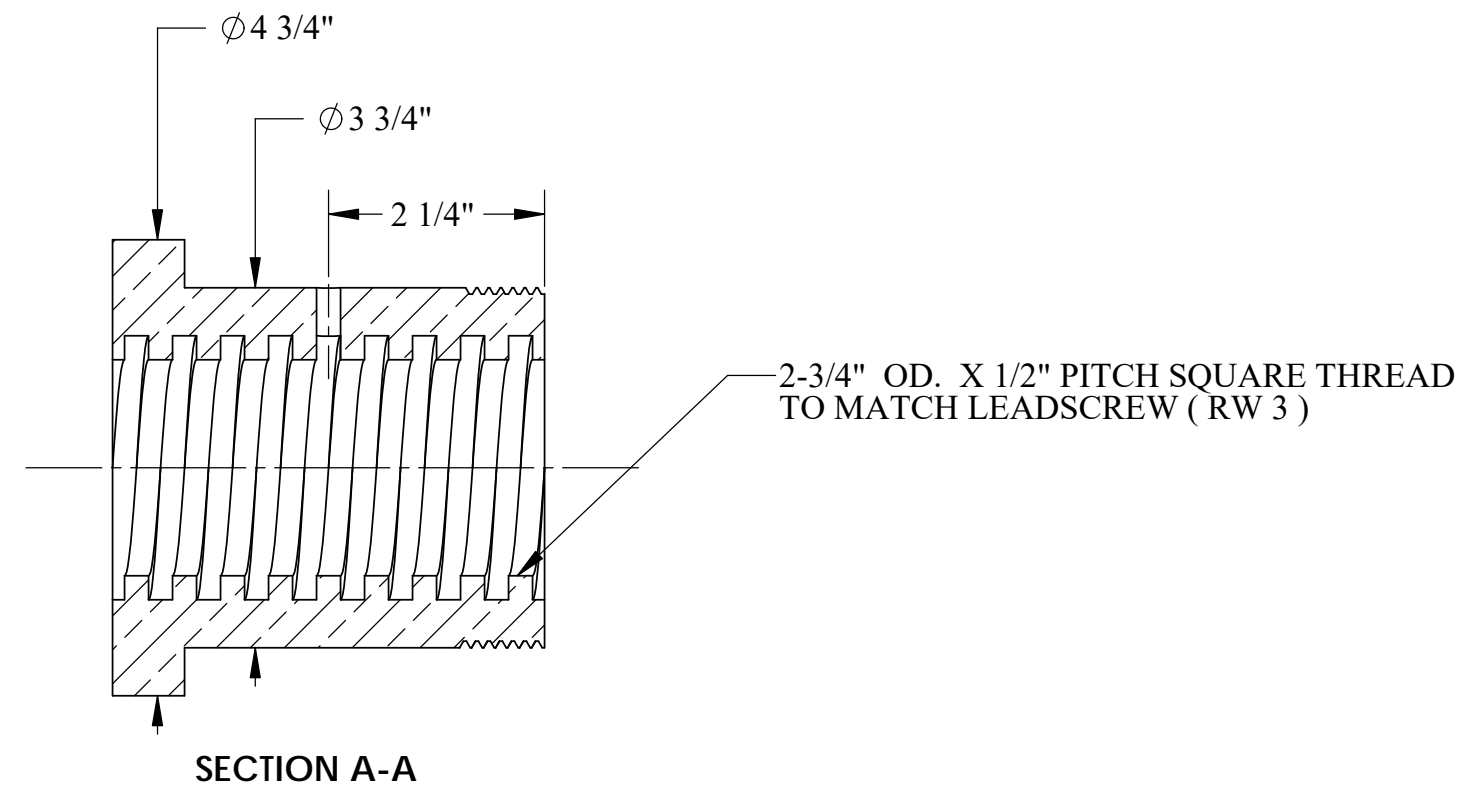
U.S.S. Monitor Steam Engine

Material STEEL	Drawn By - Date RWC 10-2018	Sub-Assembly Reversing Wheel
Weight (Lbs) 22.77	Yoke	
Scale 1:2		
Part # RW 8		



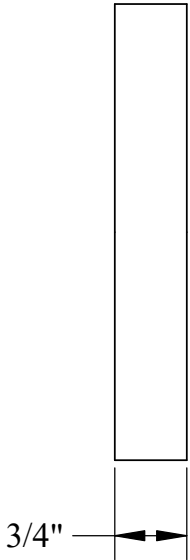
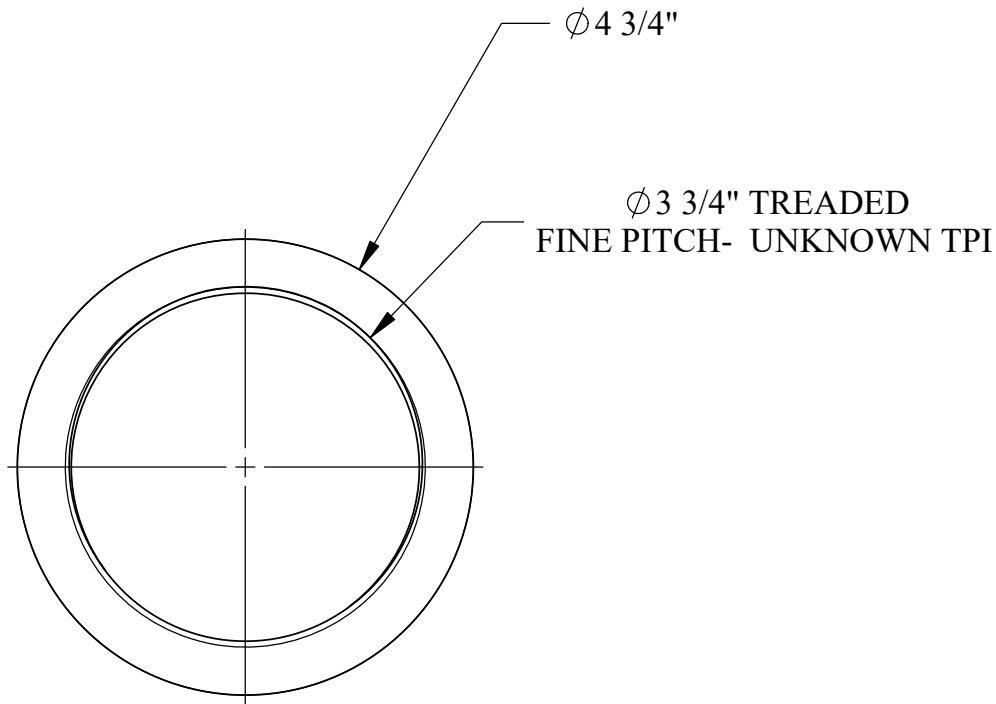
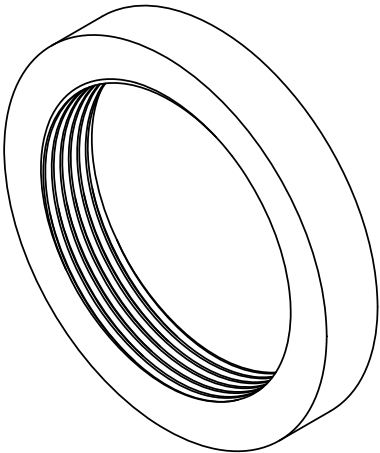
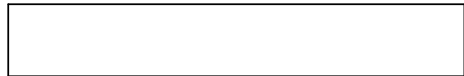
U.S.S. Monitor Steam Engine

Material STEEL	Drawn By - Date RWC 10-2018	Sub-Assembly Reversing Wheel
Weight (Lbs) 1.93	Yoke Collar	
Scale 1:1		
Part # RW 9		



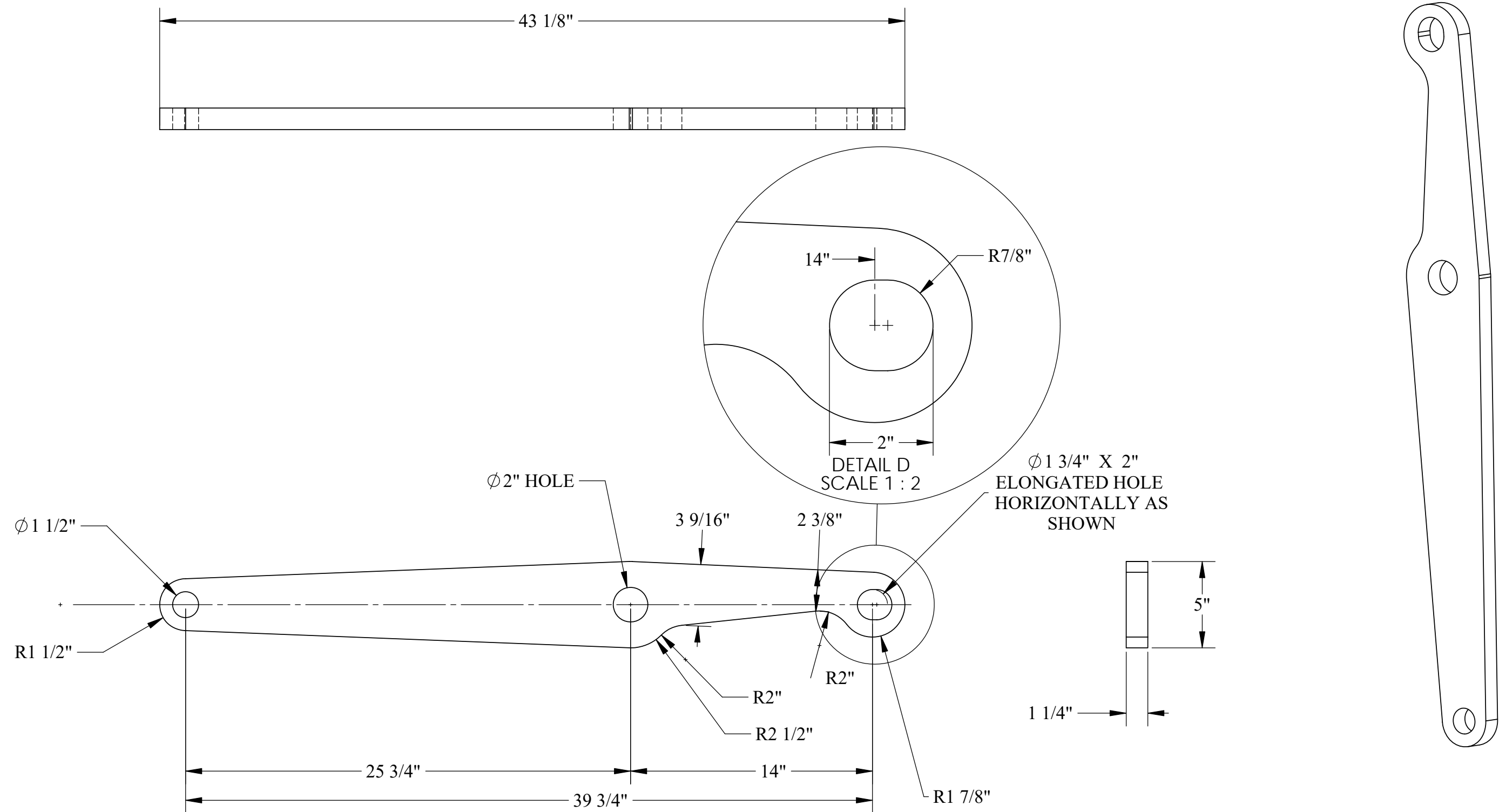
U.S.S. Monitor Steam Engine

Material Brass	Drawn By - Date RWC 10-2018	Sub-Assembly Reversing Wheel
Weight (Lbs) 9.83	Description Leadscrew Threaded Bushing	
Scale 1:2		
Part # RW 10		



U.S.S. Monitor Steam Engine

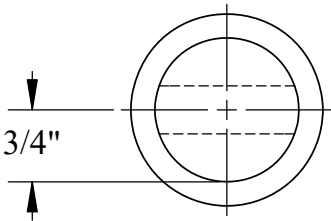
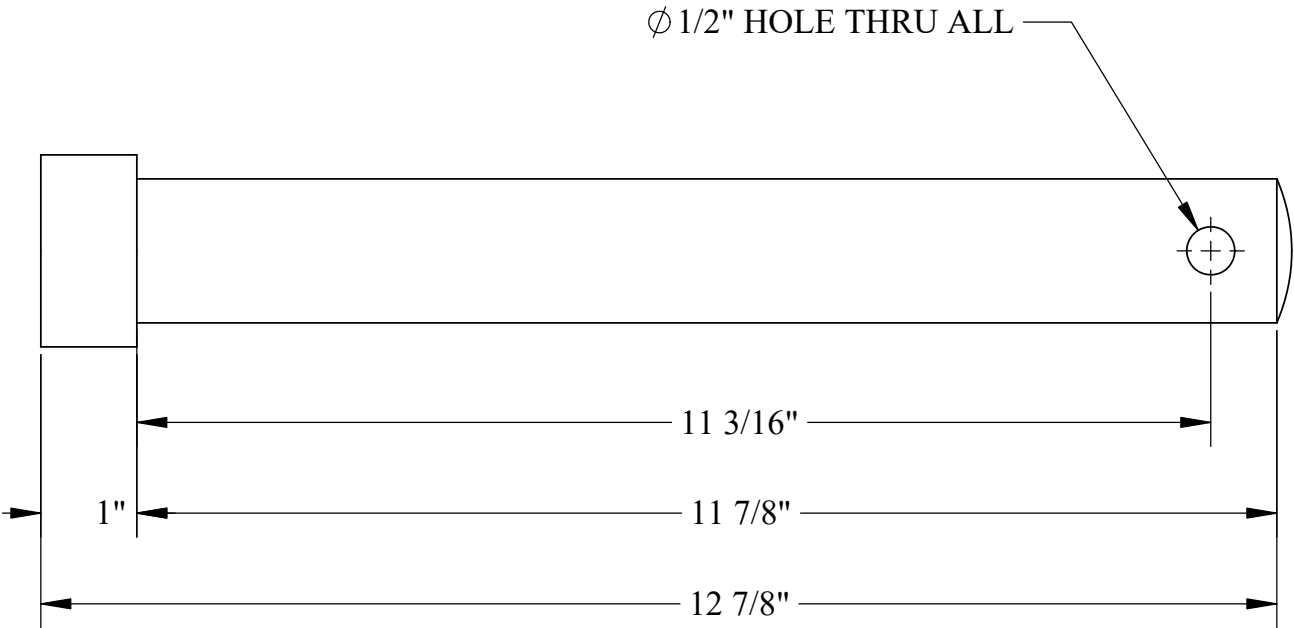
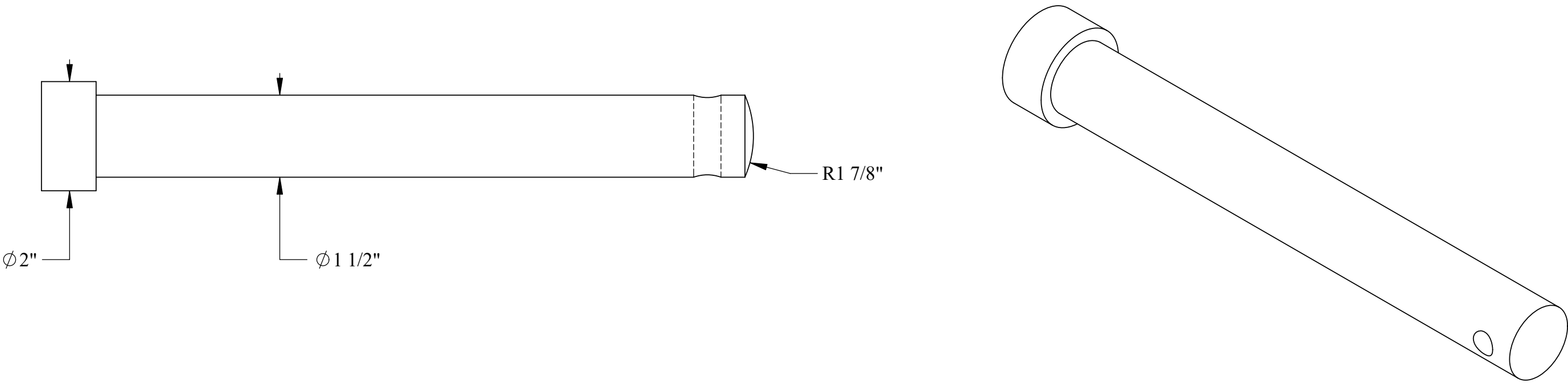
Material Brass	Drawn By - Date RWC 10-2018	Sub-Assembly Reversing Wheel
Weight (Lbs) 1.63	Description Leadscrew Threaded Bushing Nut	
Scale 1:2		
Part # RW 11		



NOTE:
THE ABOVE DIMENSIONS ARE BASED ON THE
KNOWN BULKHEAD DIMENSIONS FOR MONITOR
AND MATCH THE FORMAT FOUND IN PASSAIC
ENGINE PRINTS WHICH USED THE SAME REVERSING
GEAR BUT HAD TALLER BULKHEADS

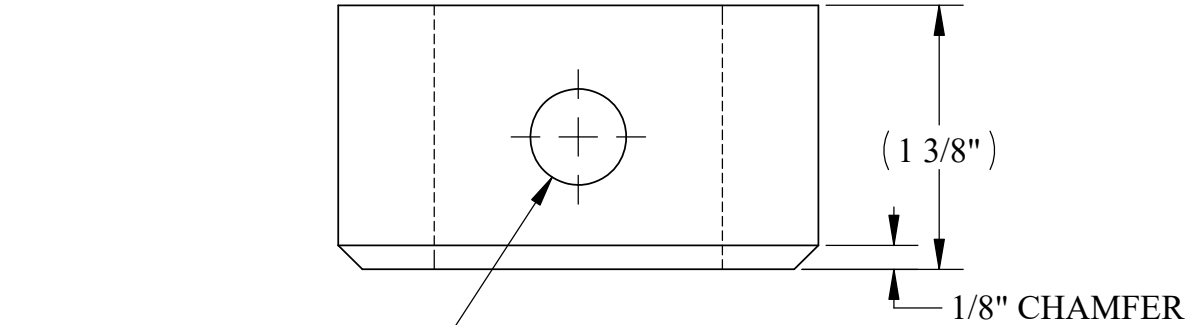
U.S.S. Monitor Steam Engine

Material STEEL	Drawn By - Date RWC 10-2018	Sub-Assembly Reversing Wheel
Weight (Lbs) 53.61	Stanchion	
Scale 1:6		
Part # RW 12		

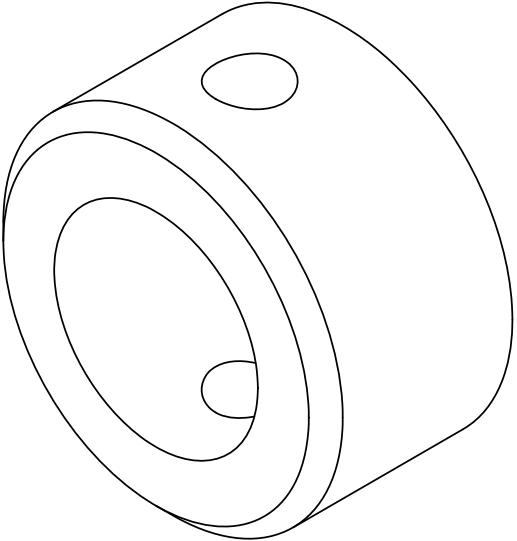
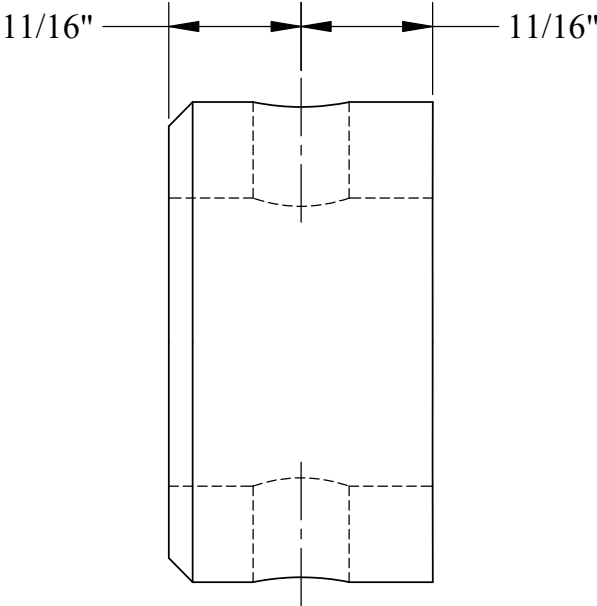
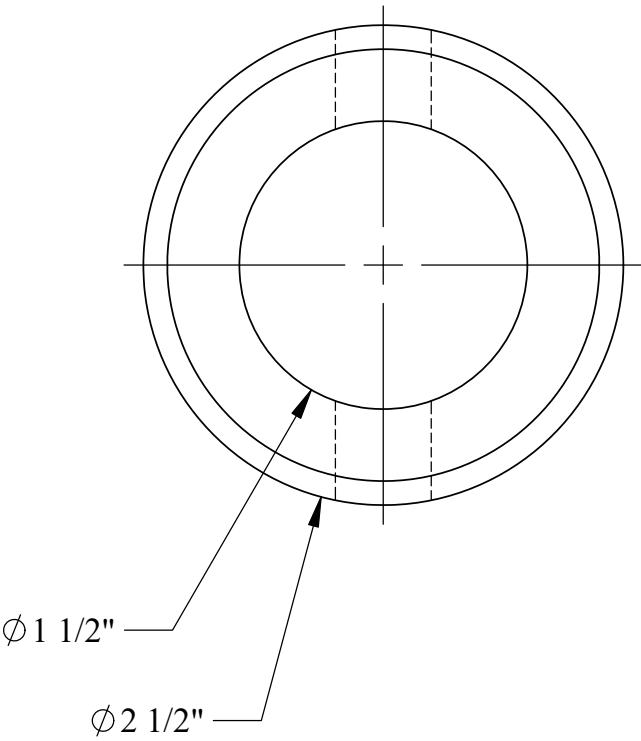


U.S.S. Monitor Steam Engine

Material STEEL	Drawn By - Date RWC 10-2018	Sub-Assembly Reversing Wheel
Weight (Lbs) 6.84	Pivot Block Pin	
Scale 1:2		
Part # RW 13		

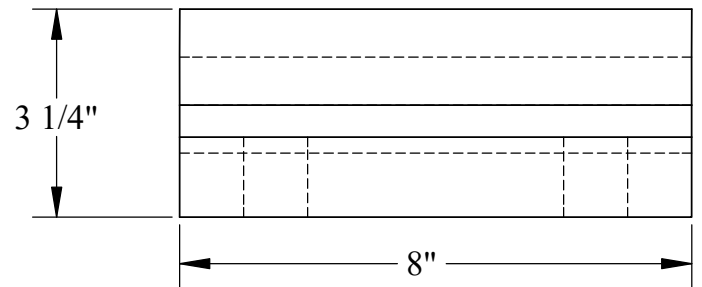
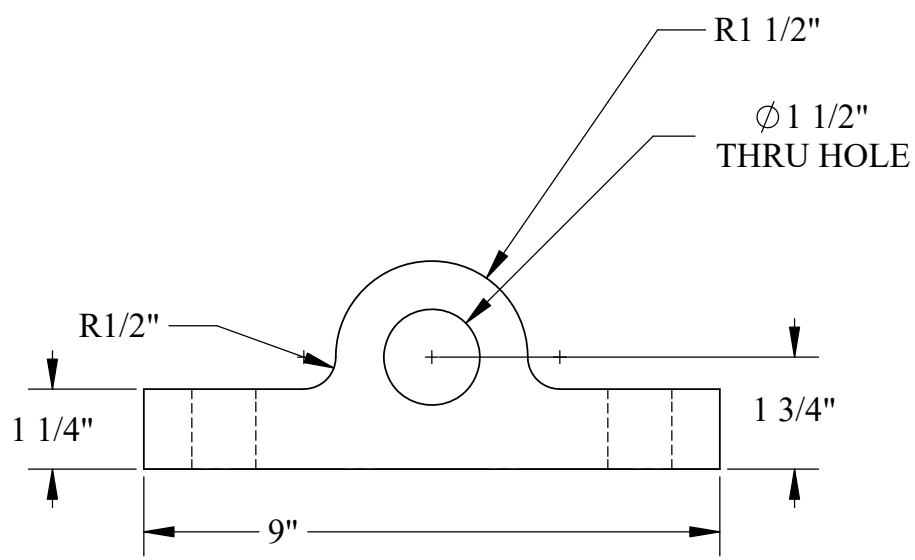
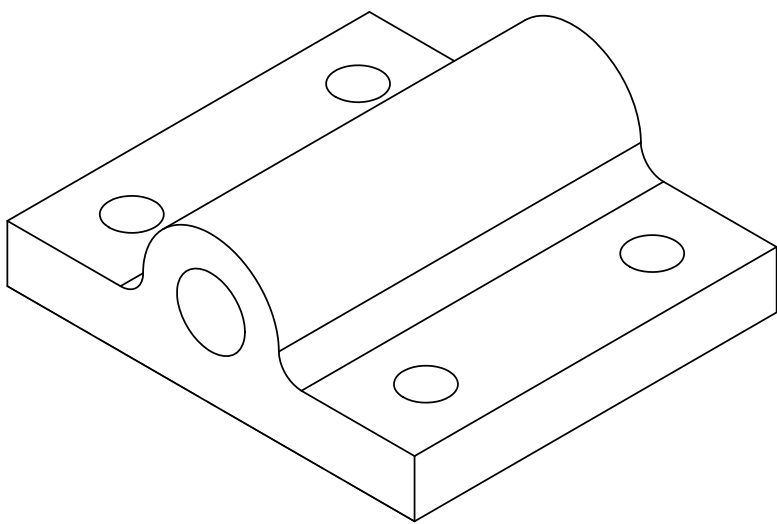
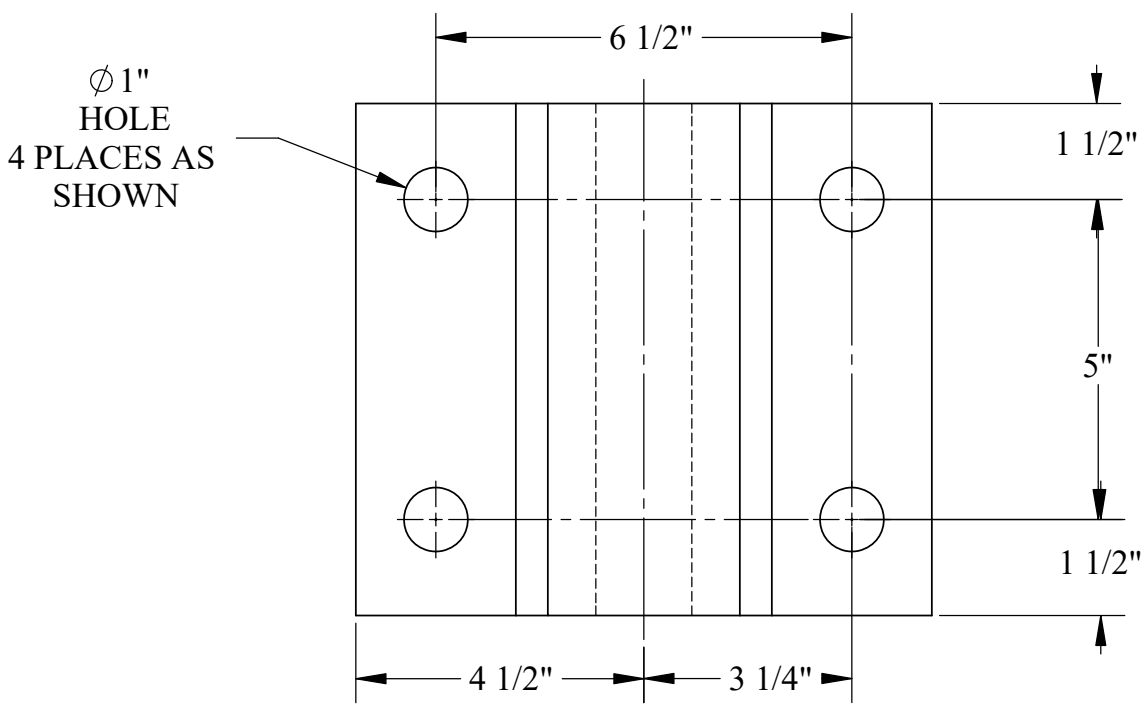


$\phi\ 1/2"$ HOLE
FOR PIN THRU ALL



U.S.S. Monitor Steam Engine

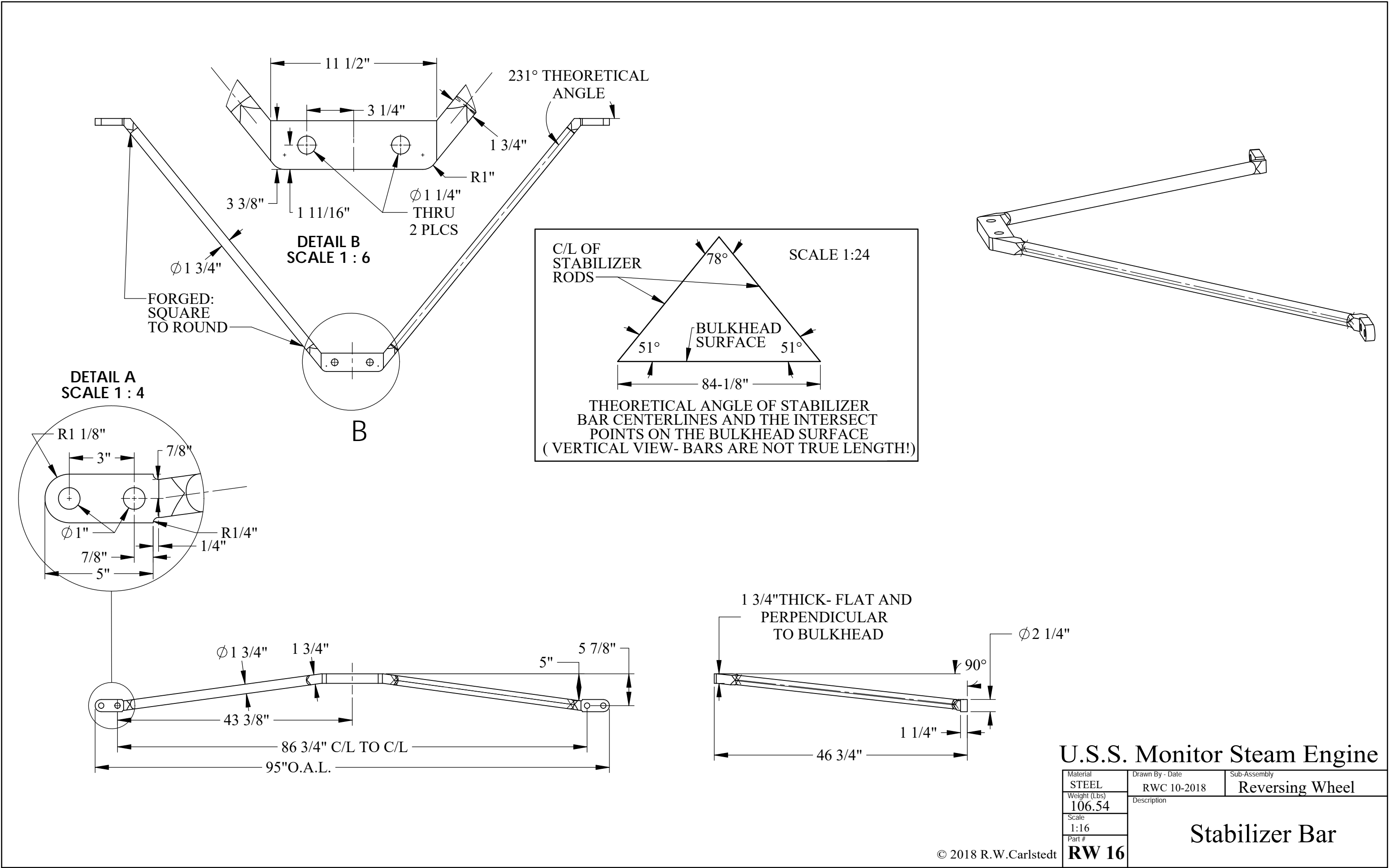
Material STEEL	Drawn By - Date RWC 10-2018	Sub-Assembly Reversing Wheel
Weight (Lbs) 1.16	Description Pivot Block Collar	
Scale 1:1		
Part # RW 14		

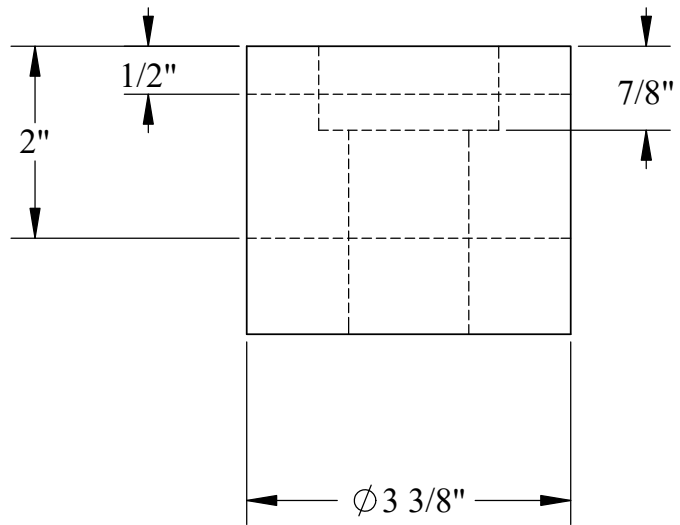
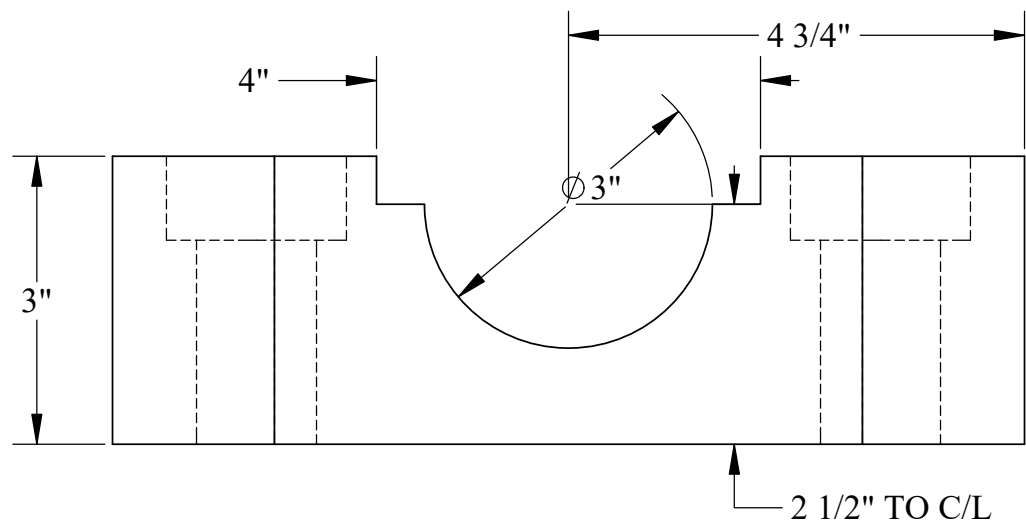
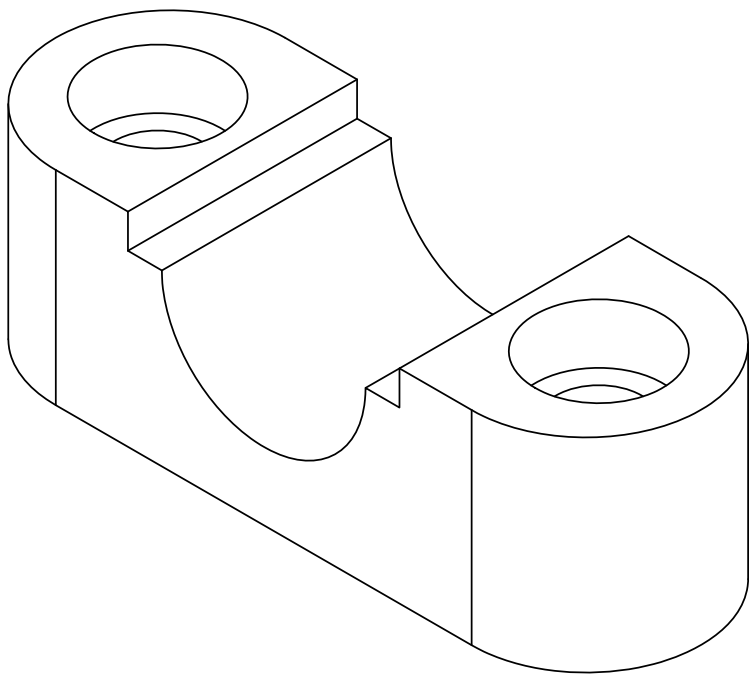
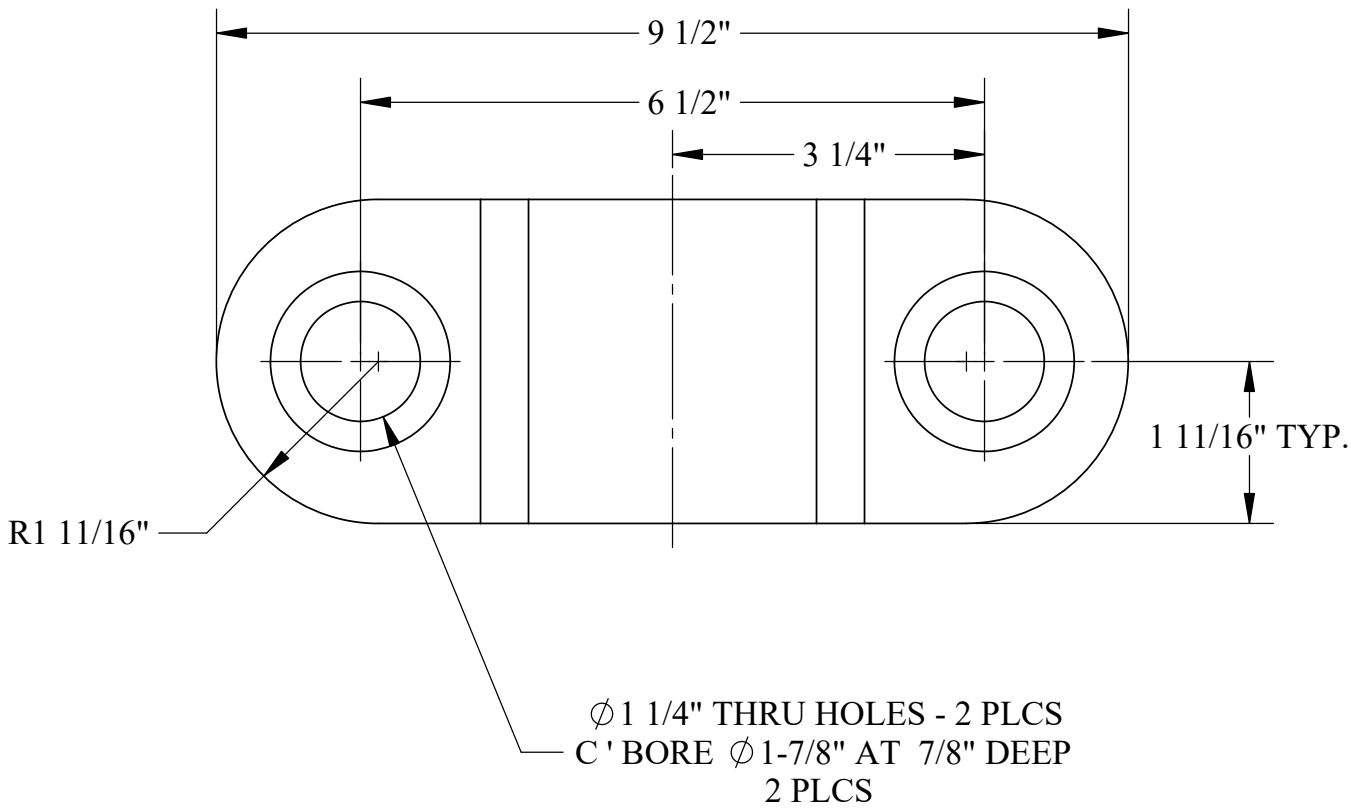


NOTE:
THERE MAY BE TWO PLATES HERE -
DUE TO A CONFLICT IN DRAWINGS FOR
HEIGHT THE BUILDER WOULD SHIM
THE FLOOR PLATE FOR ADJUSTMENT

U.S.S. Monitor Steam Engine

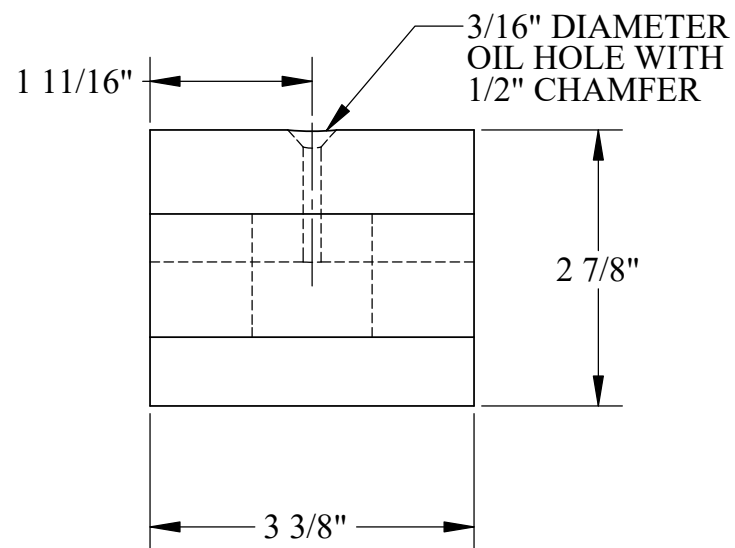
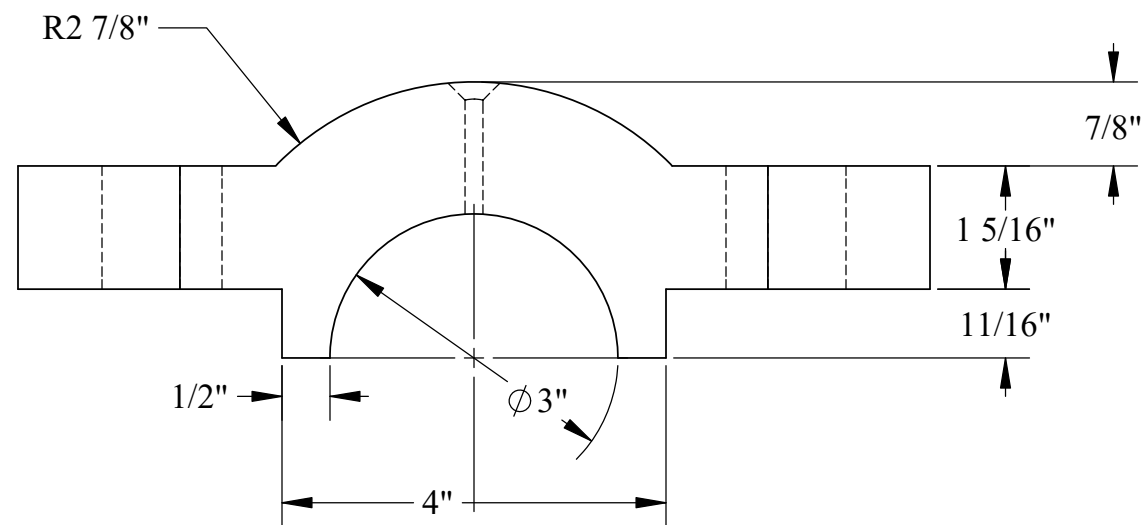
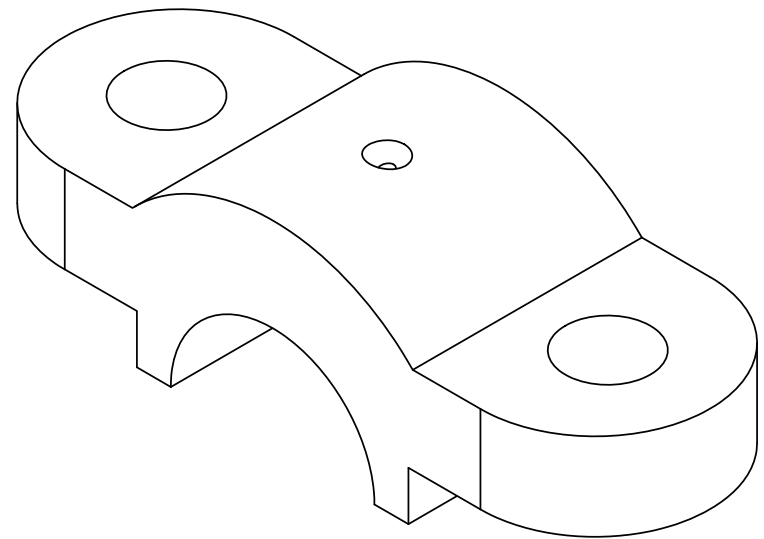
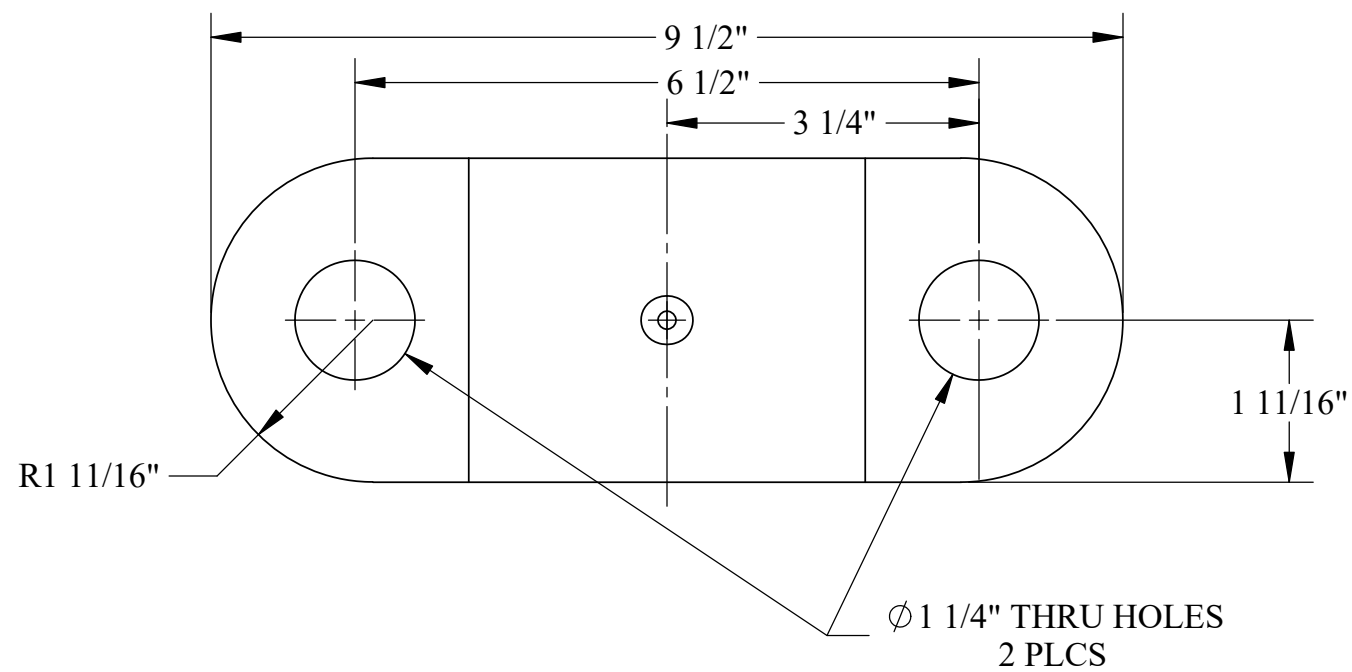
Material Cast Iron	Drawn By - Date RWC 10-2018	Sub-Assembly Reversing Wheel
Weight (Lbs) 29.41	Description Stanchion Floor Pivot Plate	
Scale 1:3		
Part # RW 15		





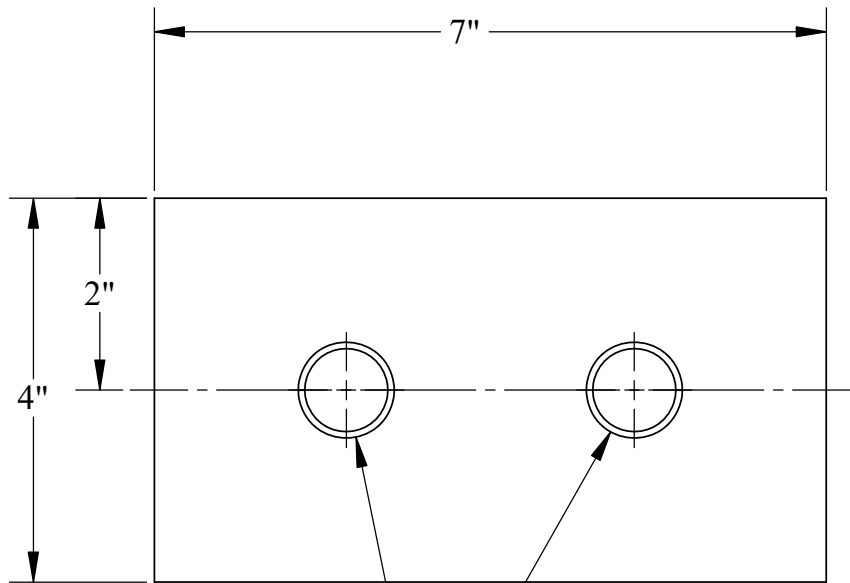
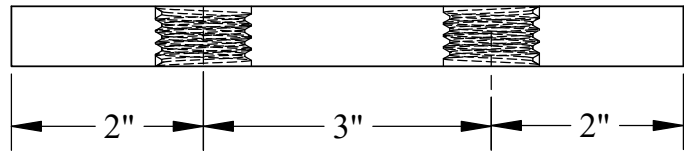
U.S.S. Monitor Steam Engine

Material Brass	Drawn By - Date RWC 10-2018	Sub-Assembly Reversing Wheel
Weight (Lbs) 18.46	Description Stabilizer Bearing Block - Bottom	
Scale 1:2		
Part # RW 17		

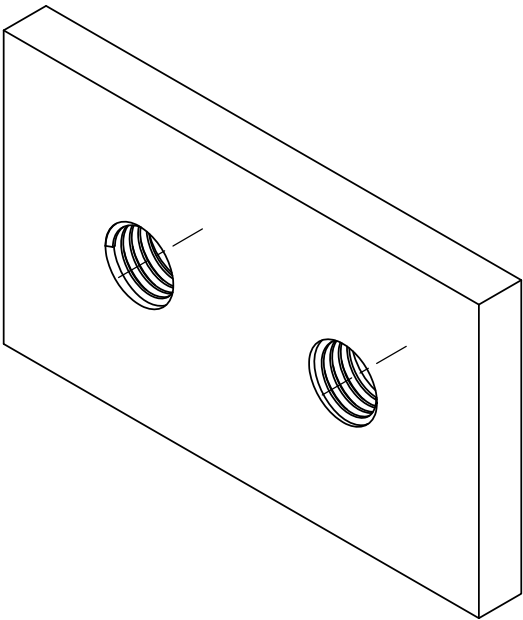
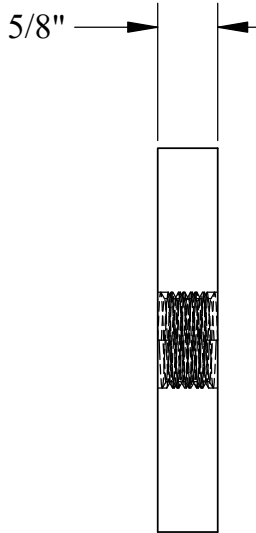


U.S.S. Monitor Steam Engine

Material Brass	Drawn By - Date RWC 10-2018	Sub-Assembly Reversing Wheel
Weight (Lbs) 12.58	Stabilizer Bearing Block - Top	
Scale 1:2		
Part # RW 18		



Ø 1" -2 THREADED HOLES



U.S.S. Monitor Steam Engine

Material STEEL	Drawn By - Date RWC 10-2018	Sub-Assembly Reversing Wheel
Weight (Lbs) 4.75	Bulkhead Nut Plate	
Scale 1:2		
Part # RW 19		

